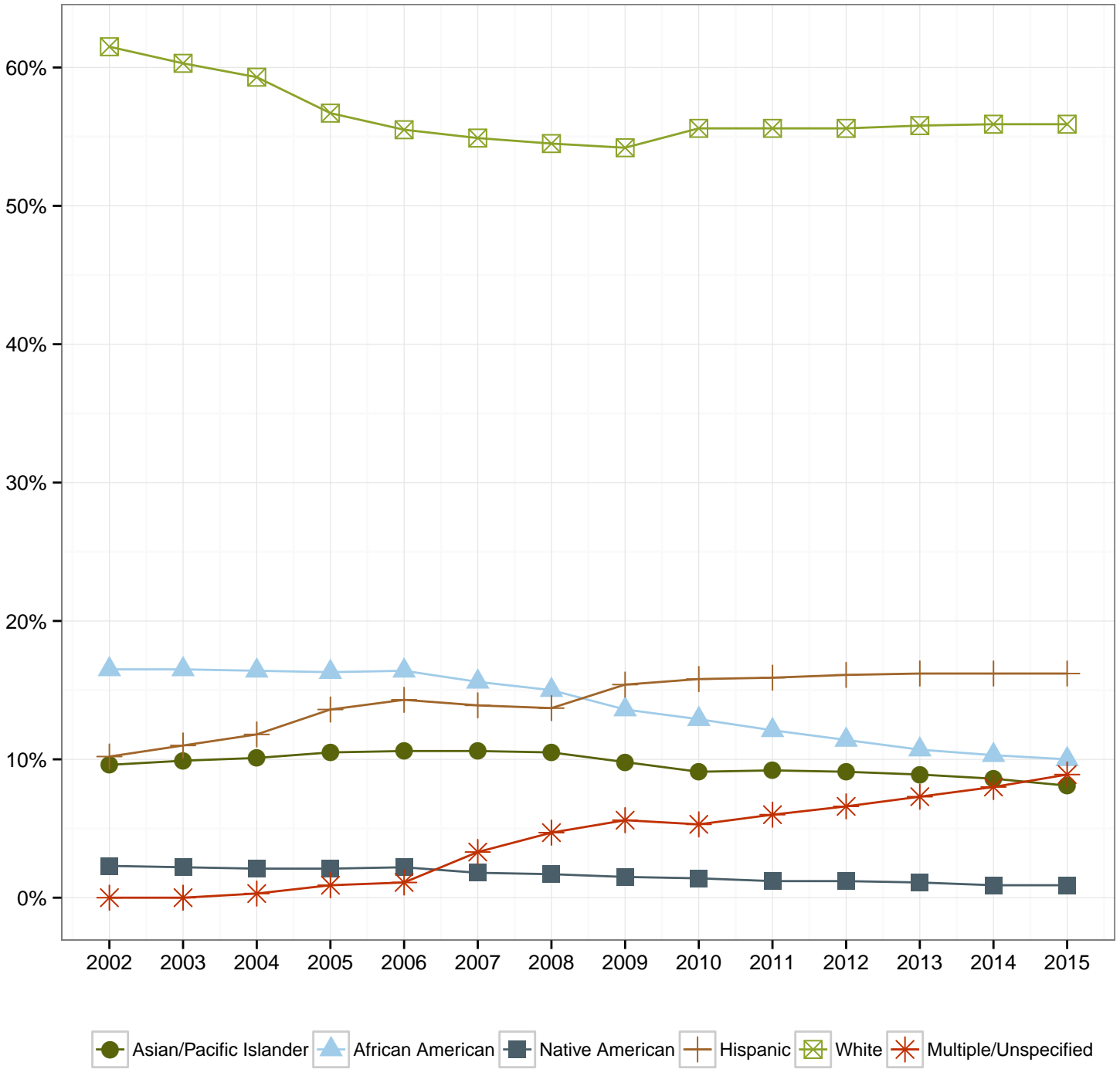


Portland Public Schools  
 District Race/Ethnicity Percentages - October 2002 to October 2015



Race/Ethnicity	2002	2003	2004	2005	2006	2007	2008	2009	2010	2011	2012	2013	2014	2015
Asian/Pacific Islander	9.6%	9.9%	10.1%	10.5%	10.6%	10.6%	10.5%	9.8%	9.1%	9.2%	9.1%	8.9%	8.6%	8.1%
African American	16.5%	16.5%	16.4%	16.3%	16.4%	15.6%	15.0%	13.6%	12.9%	12.1%	11.4%	10.7%	10.3%	10.0%
Native American	2.3%	2.2%	2.1%	2.1%	2.2%	1.8%	1.7%	1.5%	1.4%	1.2%	1.2%	1.1%	0.9%	0.9%
Hispanic	10.2%	11.0%	11.8%	13.6%	14.3%	13.9%	13.7%	15.4%	15.8%	15.9%	16.1%	16.2%	16.2%	16.2%
White	61.5%	60.3%	59.3%	56.7%	55.5%	54.9%	54.5%	54.2%	55.6%	55.6%	55.6%	55.8%	55.9%	55.9%
Multiple/Unspecified	0.0%	0.0%	0.3%	0.9%	1.1%	3.3%	4.7%	5.6%	5.3%	6.0%	6.6%	7.3%	8.0%	8.9%